

CARRIERS COTTAGE

— CHEDWORTH —



CARRIERS COTTAGE, CHEDWORTH, GL54 4AL

Sitting room · Kitchen/ dining room · Utility · 3 Bedrooms
2 Bathrooms · Terrace · Landscaped garden with water feature
Driveway with private parking · Outbuilding

A beautifully renovated Cotswold Cottage in the heart of the village

Description

Carriers Cottage is a sensational Cotswold cottage, clearly renovated with love, attention to detail and creative flare. The accommodation flows beautifully allowing for an abundance of natural light, well designed entertaining spaces and cosy corners. The underfloor heating throughout makes this a warm and welcoming home.

The kitchen/dining room is clearly the heart of the house and fabulous room in which to entertain family and friends whilst cooking up a feast.

The breakfast bar is the perfect spot for morning chats over coffee and setting the world to rights. French doors open up on to the terrace and garden beyond. The dining room area is such a great space with gorgeous flooring and plenty of room for a large dining table.

The sitting room, with views to the front and rear of the house, is spacious and beautifully proportioned. This a lovely room for relaxing and unwinding.

The snug is cosy and quaint and perfect for movie nights and lazy Sunday afternoons with a good book.

The utility room is a great addition to the ground floor perfect for kitchen overflow, piles of washing and winter coats and wellies.

Upstairs comprises the master bedroom with ensuite shower room. There are two further bedrooms and a family shower room. All the rooms have been beautifully laid out to provide ample discreet storage and lovely views over the village and countryside.

The landscaped garden, is predominantly laid to lawn with a pretty water feature, beautiful herbaceous borders and potted plants. The terrace overlooking the garden is ideal for al fresco dining during the warmer months and **benefits from the sunshine throughout the day.** The thoughtful lighting scheme highlights the outdoor features in the evenings. There is private parking on the driveway and an outbuilding.

Location

Carriers Cottage is located up a quiet no through lane, a peaceful and beautiful setting in the stunning Cotswold village of Chedworth. This thriving village community is home to a beautiful church, a popular pub, The Seven Tuns, which is within walking distance, the highly regarded St Andrews Church of England Primary School, and offers a wide range of clubs and societies. Conveniently located, the property is close to both Cirencester and Cheltenham.

Known as the "Capital of the Cotswolds", Cirencester is a hub of vibrant cultural life known for its beautiful limestone townhouses, exciting boutiques, restaurants, cafes and twice weekly markets.

Cheltenham is a short drive north and not only offers excellent shopping and dining, it is also host to fabulous literary, jazz and food festivals, and of course horse racing.

The area offers an excellent choice of schooling, including outstanding State and Grammar Schools, as well as a wide range of impressive private schools.

Sporting opportunities are abundant in the area with nearby golf courses in Cirencester, Cheltenham, and Naunton Downs; bridle paths are plentiful; sailing and water sports can be enjoyed at the Cotswold Water Park.

Communications in the area are excellent with high-speed internet and easy access to major hubs and international airports in the South-West, the Midlands and London, via the M4 and M5 motorways and well-connected direct train services.

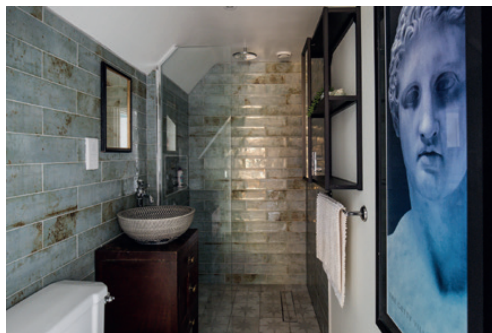


Cirencester 7 miles
Cheltenham 12 miles
Kemble Station 13 miles
(London Paddington 75 mins)
Swindon 25 miles
M4 (Junction 15) 27 miles

All distances and times are approximate







General Information

Tenure: Freehold.

Services: Mains water and electricity.
Private drainage. Air Source Heat Pump
heating system.

Postcode: GL54 4AL.

Viewing: Strictly by appointment through
Sharvell Property Ltd.

Fixtures and Fittings: Some mentioned in these
sales particulars may be included in the sale.
All others are specifically excluded but may be
made available by separate negotiation.

Local Authorities: Cotswold District Council,
Trinity Road, Cirencester, Gloucestershire.
Tel: 01285 643000. Council Tax Band E and
EPC rating E.



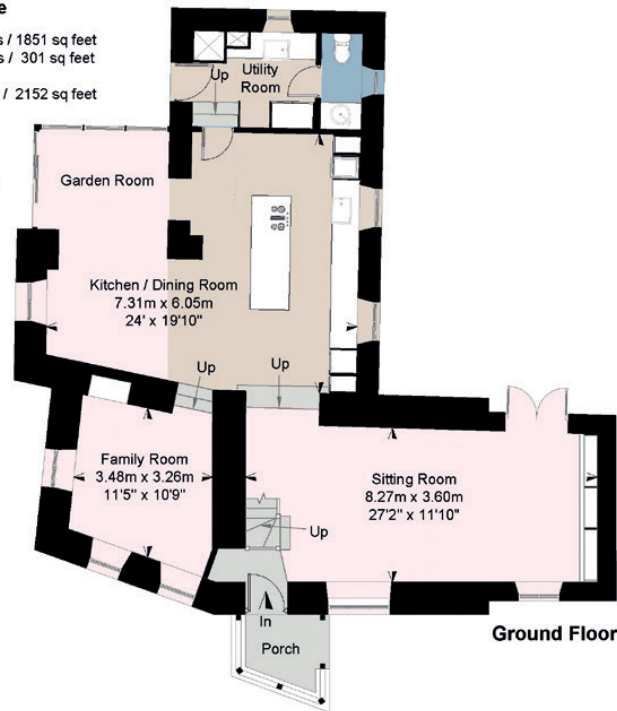
Carriers Cottage, Chedworth, Gloucestershire

House Approximate IPMS2 Floor Area 172 sq metres / 1851 sq feet
Store 28 sq metres / 301 sq feet

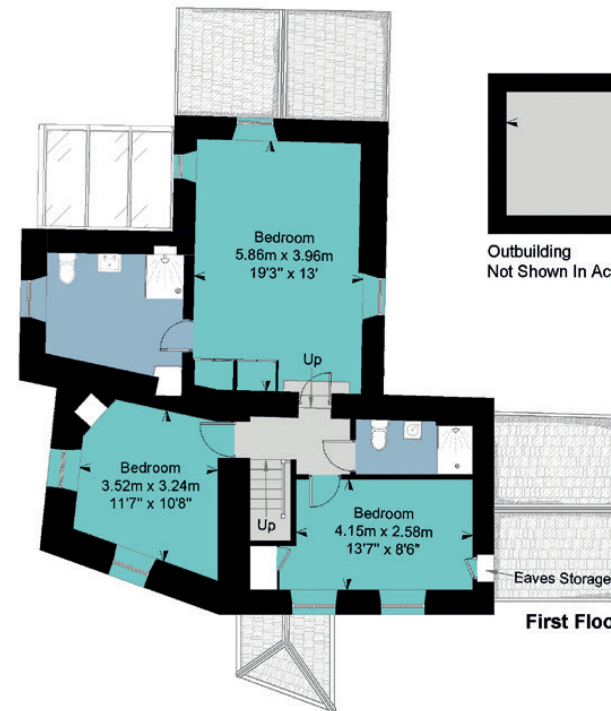
Total 200 sq metres / 2152 sq feet

Simply Plans Ltd © 2022
07890 327 241
Job No SP2887

This plan is for identification and guidance purposes only.
Drawn in accordance with R.I.C.S guidelines.
Not to scale unless specified.
IPMS = International Property Measurement Standard



Ground Floor



First Floor



Outbuilding
Not Shown In Actual Location Or Orientation

SHARVELL PROPERTY
— THE COTSWOLD ESTATE AGENCY —

t: 01285 831 000 | e: office@sharvellproperty.com

Rowan Tree House, Robinson Lane, Woodmancote, Cirencester, Gloucestershire, GL7 7EN

www.sharvellproperty.com

If you require this publication in an alternative format, please contact Sharvell Property Ltd on T: 01285 831000. IMPORTANT NOTICE: Sharvell Property Ltd, their client and any joint agents give notice that: 1. They are not authorised to make or give any representations or warranties in relation to the property either here or elsewhere, either on their own behalf or on behalf of their client or otherwise. They assume no responsibility for any statement that may be made in these particulars. These particulars do not form part of any offer or contract and must not be relied upon as statements or representation of fact. 2. Any areas, measurements or distances are approximate. The text, photographs and plans are for guidance only and are not necessarily comprehensive. It should not be assumed that the property has all necessary planning, building regulation or other consents and Sharvell Property Ltd have not tested any services, equipment or facilities. Purchasers must satisfy themselves by inspection or otherwise. Details September 2022.